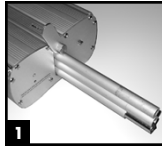


# Skyline<sup>®</sup>

## Banner Stand 3000-R Double Sided

1-800-328-2725  
www.skyline-exhibits.com

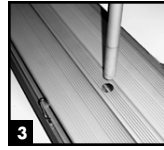
© 2003 Skyline Exhibits PN24983-A



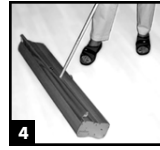
**1)** Remove shockcordinated pole by partially loosening thumbscrew on cover and sliding out of base.



**2)** Connect pole sections.



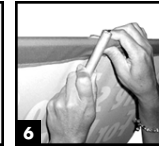
**3)** Place one end of the pole into the hole on the top of the base.



**4)** Holding the pole near the top, tilt the pole and base towards you.



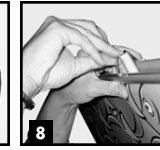
**5)** Reach down and grasp a graphic top bar and carefully pull the graphic up from the base.



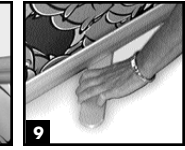
**6)** Place the hook at the top of the pole.



**7)** Pull the remaining graphic up.



**8)** Holding the top bar of the first graphic, place the hook into the end of the pole.



**9)** Lift one end of base and swing out feet.

**To disassemble:** Reverse set-up procedure. Lower the graphics slowly and keep them centered – **do not allow graphics to scrape the sides of the base!**